

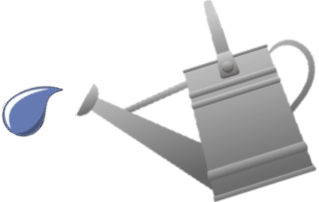

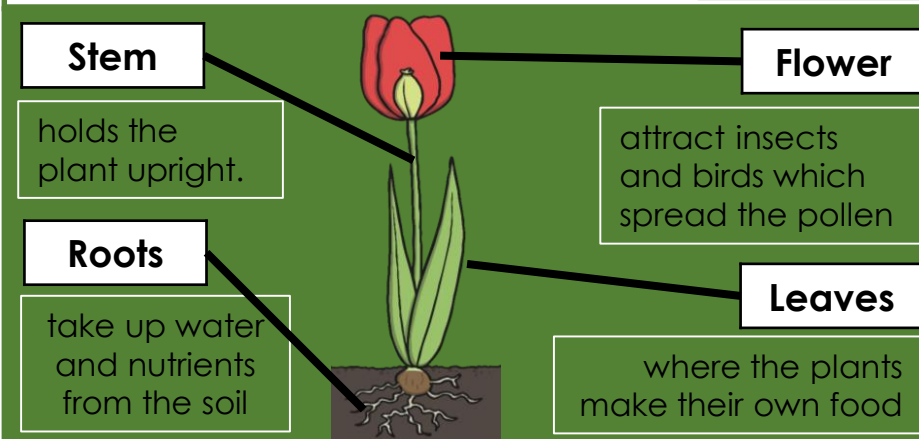
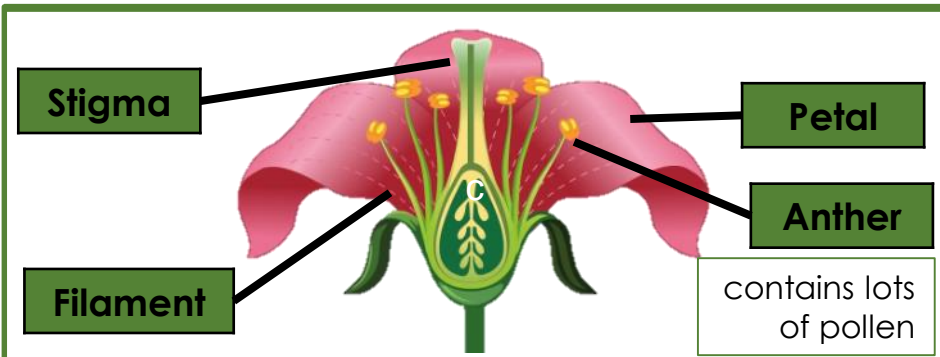


Plants : Year 1 & 2 : Summer 1



What plants need to survive

<p>Sunlight</p> 	<p>Carbon dioxide from the air</p> 
<p>Water</p> 	<p>The correct temperature</p> 

Parts of a flower



Types of tree

Deciduous Trees	Evergreen Trees
<p>Lose leaves each year</p> <p>Deciduous leaves are:</p> <ul style="list-style-type: none"> • flat • broad • have veins • running through them <p>Examples include: Oak trees Sycamore trees</p> 	<p>Keep leaves all year round</p> <p>Evergreen leaves are:</p> <ul style="list-style-type: none"> • thick • small • Narrow like needles <p>Examples include: Yew trees Pine trees</p> 

How a bean grows

