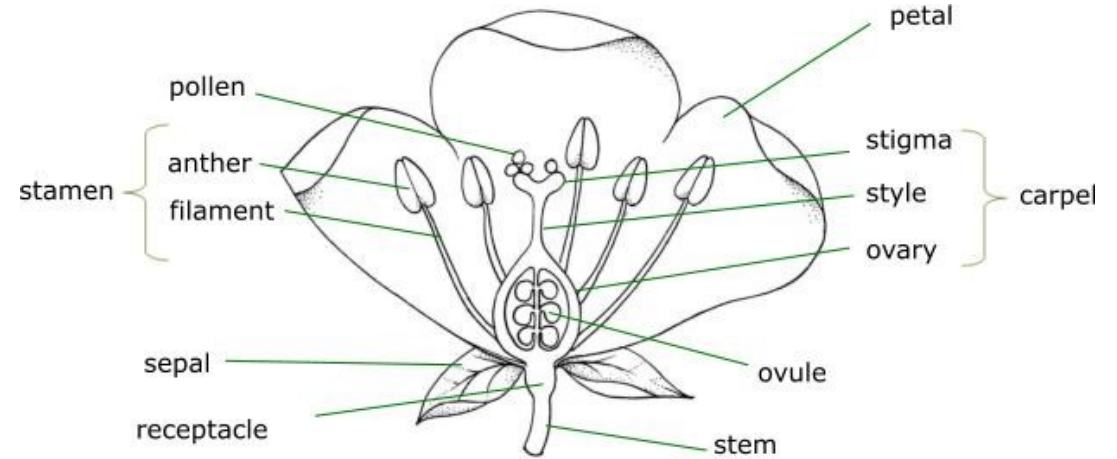


How are the life cycles of animals and plants different?

Key word	Definition
Gamete	A gamete is the male or female reproductive cell that contains half the genetic material of the organism.
Life Cycle	The stages a living thing goes through during its life.
Pollination	The process that allows plants to reproduce.
Germination	It occurs when a spore or seed starts to grow.
Propagation	If you propagate plants, you grow more of them from the original plant.
Insect	Small animal with a hard body. An insect has three parts: thorax, abdomen and head. They have two antennae and three pairs of legs.
Amphibian	A cold-blooded vertebrate animal (such as frogs and toads) that has gills and lives in water as larvae but breathes air as adults.
Mammal	A mammal is an animal that breathes air, has a backbone and grows hair at some point during its life.
Naturalist	A person who studies nature and especially plants and animals.
Conservation	The protection of things found in nature.
Reproduction	Producing offspring sexually or asexually.

For **asexual** reproduction, only one parent is required - it does not involve sex cells or fertilisation. When there is only one parent, there is no fusion of gametes and no mixing of genetic information so the offspring will be identical to the parent. This is unlike **sexual** reproduction which needs two parents.



Who am I?
Why might I be on your
Knowledge Organiser?

