

Light

KNOWLEDGE ORGANISER
(OWLS/SQUIRRELS)

Key Vocabulary:

Beam - A ray of light

Illuminate - to brighten with light

Reflection - Light that bounces off an object

Image - A picture of something formed by a mirror

Concave - Curved inwards (like the inside of a bowl)

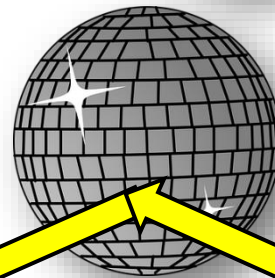
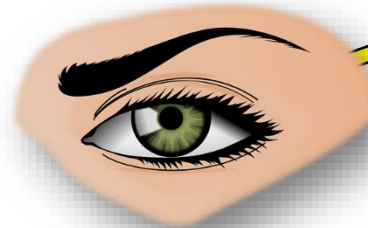
Convex - Curved outwards (like the outside of a ball)

Symmetrical - When an object is the same on both sides of a dividing line.



Light travels in straight lines. It travels from the light source either directly into our eyes, or reflecting off objects at 670 million mph.

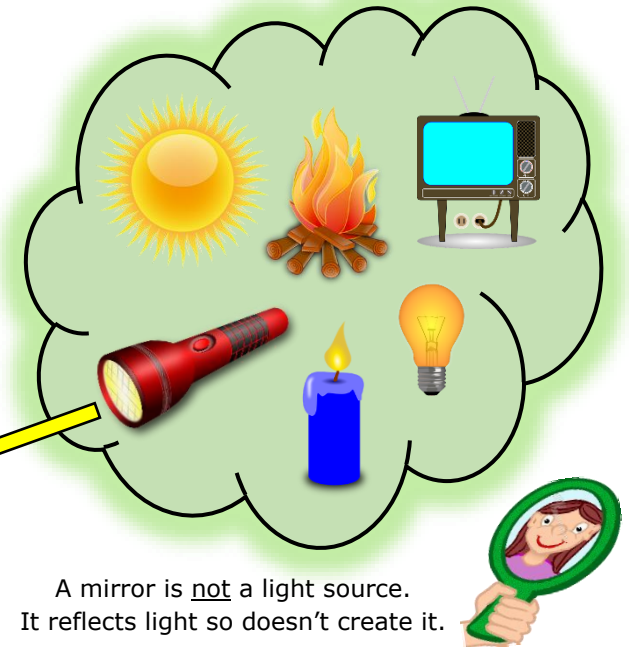
Because light travels in straight lines, when it hits an object, it is blocked. It can't bend around the object so it casts a shadow.



When light hits a smooth object, it bounces off (reflects) making it appear shiny.



LIGHT SOURCES



A mirror is not a light source. It reflects light so doesn't create it.

Opaque: This is the name given to objects which light *cannot* travel through. They block light and create shadows

Translucent: This is the name given to objects which *some light* can travel through.

Transparent: This is the name given to objects which light *can* travel through.

- 1.) We can see objects because light reflects off them and into our eyes.
- 2.) Light reflects off most objects, especially colours like white and yellow.
- 3.) If there is no light at all (pitch-black), then there is no light to reflect and we can't see anything at all.
- 4.) At night you can still see a bit in the dark because the moon is reflecting light.

Rainbows are formed when the sun shines through water particles (transparent) and when white light passes through, it 'bends' and splits into the range of colours which make white light

ROY G. BIV

