

Foxes' Class—Animals, Including Humans Knowledge Organiser

KEY VOCABULARY AND SPELLINGS

Digestion – breaking down ingested food material.

Excretion – the process of eliminating faeces, sweat or urine from the body

Nutrients – a source of nourishment that gives energy.

Food chain – shows how plants and animals get their energy.

Producer – the start of a food chain and an organism that makes its own food (normally a plant)

Consumer – a living thing that eats other plants and animals.

Predator – an animal that eats other animals.

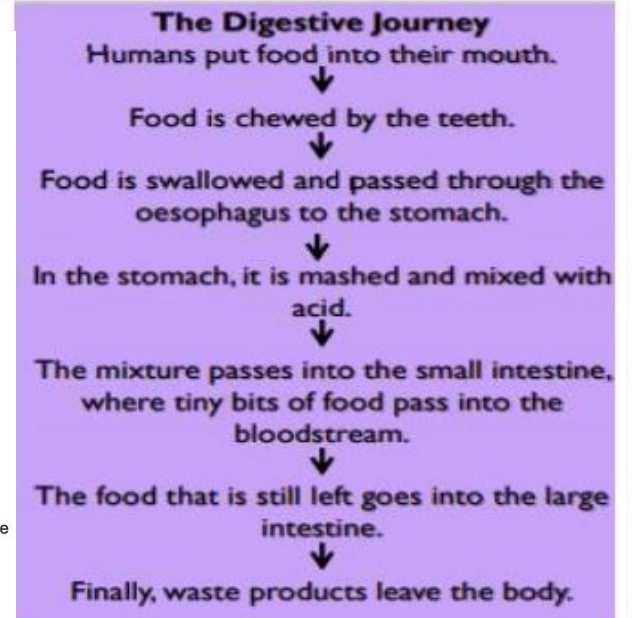
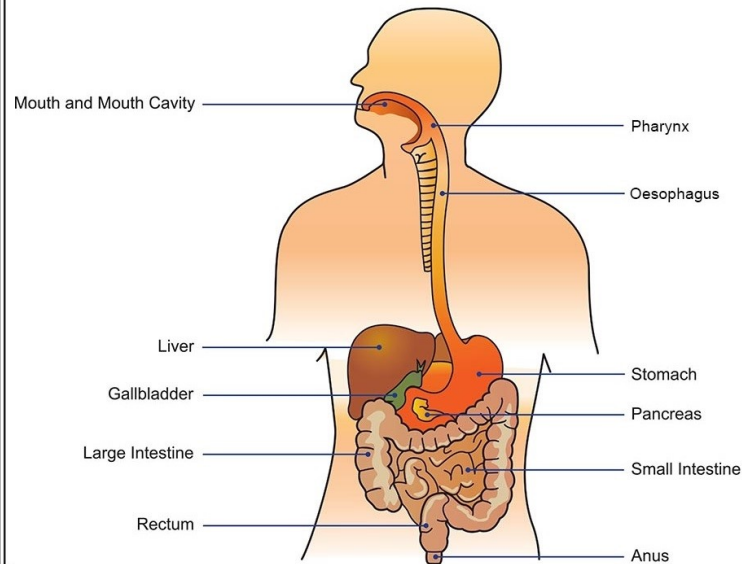
Prey – the animals that predators eat.

Energy – is strength and power, enables us to do the things we do.

Calcium – a chemical that helps keep your teeth strong.

Canine, incisor and molar – different types of teeth.

DIGESTIVE SYSTEM – many organs are involved in the process of digestion which softens food so that it can pass through the body. As it moves through the body the nutrients which are required to keep us healthy and have energy are absorbed into the body.

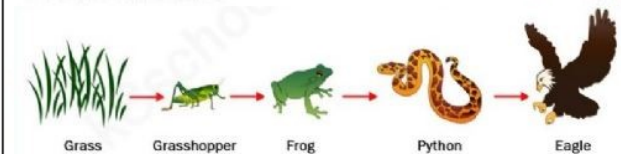


TEETH

INCISORS – bite the food, at the front of the mouth.
CANINES – tear and rip the food, next to the incisors.
MOLARS and PREMOLARS – grind the food when we chew, at the back of the mouth.



FOOD CHAINS



Food chains show the relationships between plants and animals when they are eaten. When a living thing is eaten the energy from it is passed to the animal that has eaten it.

The arrows show the transfer of energy.